



Service  
Départemental  
d'Incendie  
et de Secours  
des Landes

GeoPOSTEWEB  
Operational web mapping



The operational web mapping helps the Fire & Rescue Service of Les Landes (SDIS 40) to have an overview of its resources.

### Project objectives

- View **operational situations** (Incidents, Appliances geolocation, Incident zones, etc.), on a **mapping background** (Ortho photo, Land use, Hydrants, Risk premises, etc...).
- **Supervise the operational capacities** (to equip appliances) and have **alert thresholds** allowing the **Operational Control Room (OCR)** to anticipate and react accordingly.
- Integrate the solution within the mobilising system to avoid the multiplication of third-party applications.
- Have a **Full Web solution** allowing the **sharing and exchange of information** between the OCR and the stakeholders (Command Post, Chain of Command).
- **Shared mapping** with the OCR provided to Stations

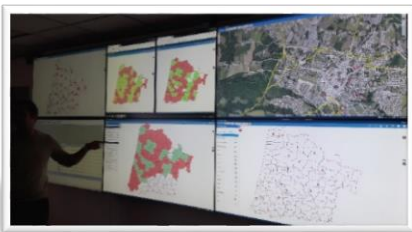
### FRS Key figures

- **272** Professional firefighters
- **1530** Volunteer firefighters (16% female staff)
- 69 FRS Administrative and Technical staff
- **639 Appliances**
- **35 938 Incidents in 2018**



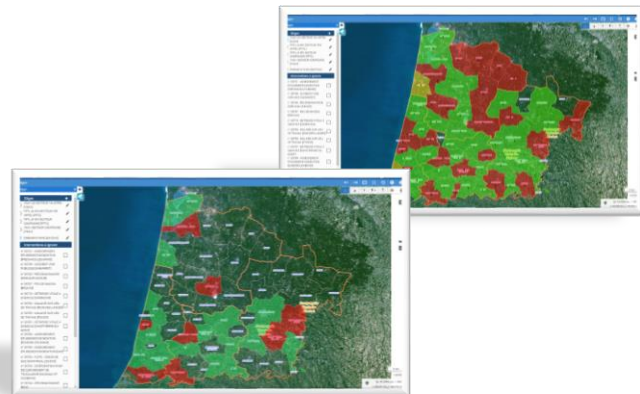
### Implementation and evolution

- Place the **GIS at the heart of the mobilising system**
- Have a **consolidated and operational mapping database**
- Train business functional administrators
- Equip OCR with **image wall** for information sharing
- Equip **command post appliances** for information sharing (Satellite link, screens)
- Equip the station with a screen dedicated to **mapping**
- In the long term, equip appliances with dedicated mobile data terminals with the same mapping



### Focus on SITGEN

- **Dynamic scripting** : the OCR Supervisor is able to view **the appliances capacities in real time** which allows to anticipate and make the necessary adjustment decisions
- **Equipment supervision: the OCR Supervisor has a tool that mixes the availability of crews and appliances in real time**



SYSTEL SA

17 rue Leverrier

ZI de Belle Aire B.P. 40031

17442 Aytré - France

Tel System UK : +44 1484 5981 82

Tel System FR : +33 5 46 44 57 20

[systel-uk@systel-sa.com](mailto:systel-uk@systel-sa.com)

[www.systel-sa.fr/en](http://www.systel-sa.fr/en)